



Fulton County 2024 Q1 Update

February 21, 2024

Collie Greenwood

General Manager/CEO

Agenda

Operations Updates

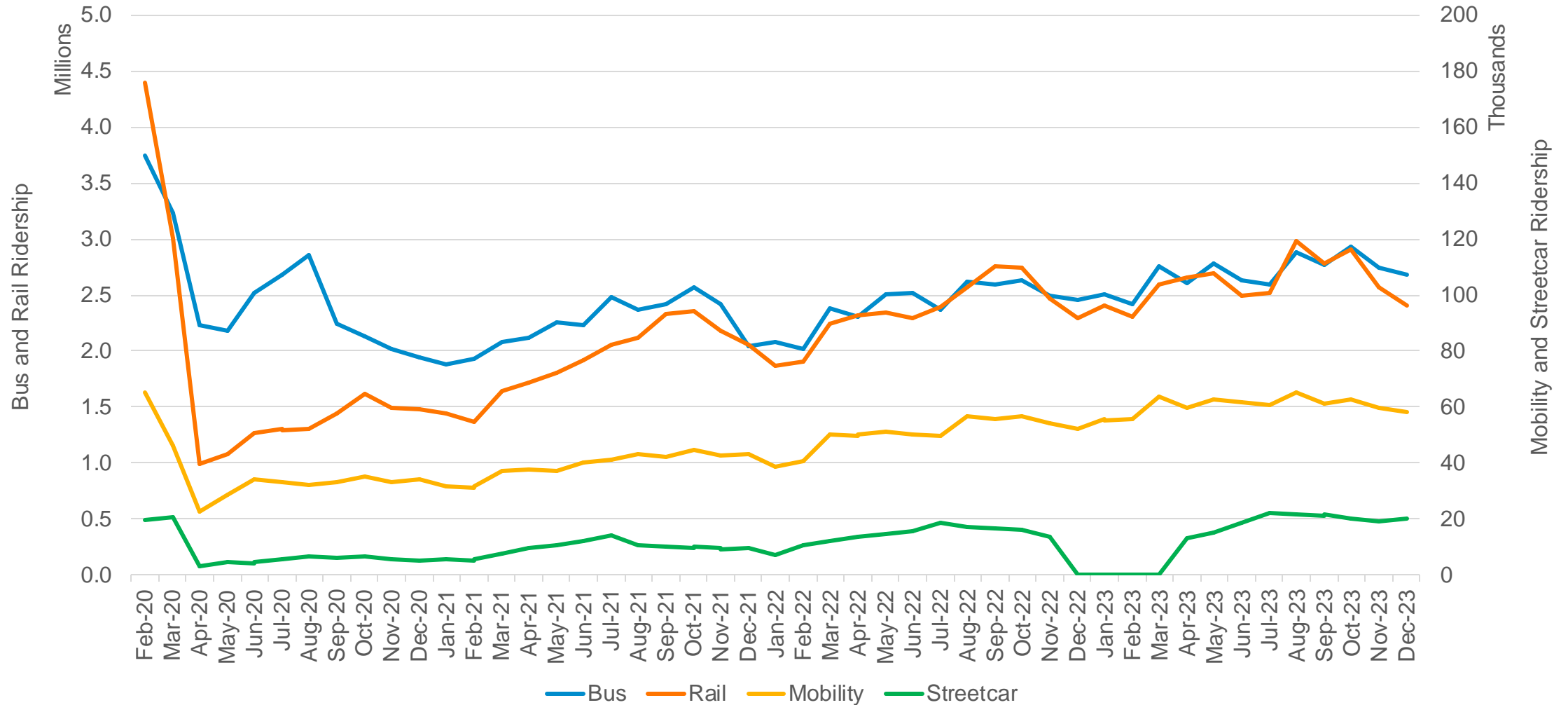
Capital Program

Other MARTA News



Operations Updates

MARTA Monthly Ridership by Mode February 2020 - December 2023



BUS SHELTERS & AMENITIES UPDATE

| | FY20 | FY21 | FY22 | FY23 | FY24 |
|--|-----------------------|------|------|------|------------|
| Amenities Delivery Pre-COVID Estimate | 50 amenities per year | | | | |
| Amenities Delivered | 25 | 16 | 37 | 46 | 126 |
| TOTAL | | | | | 250 |

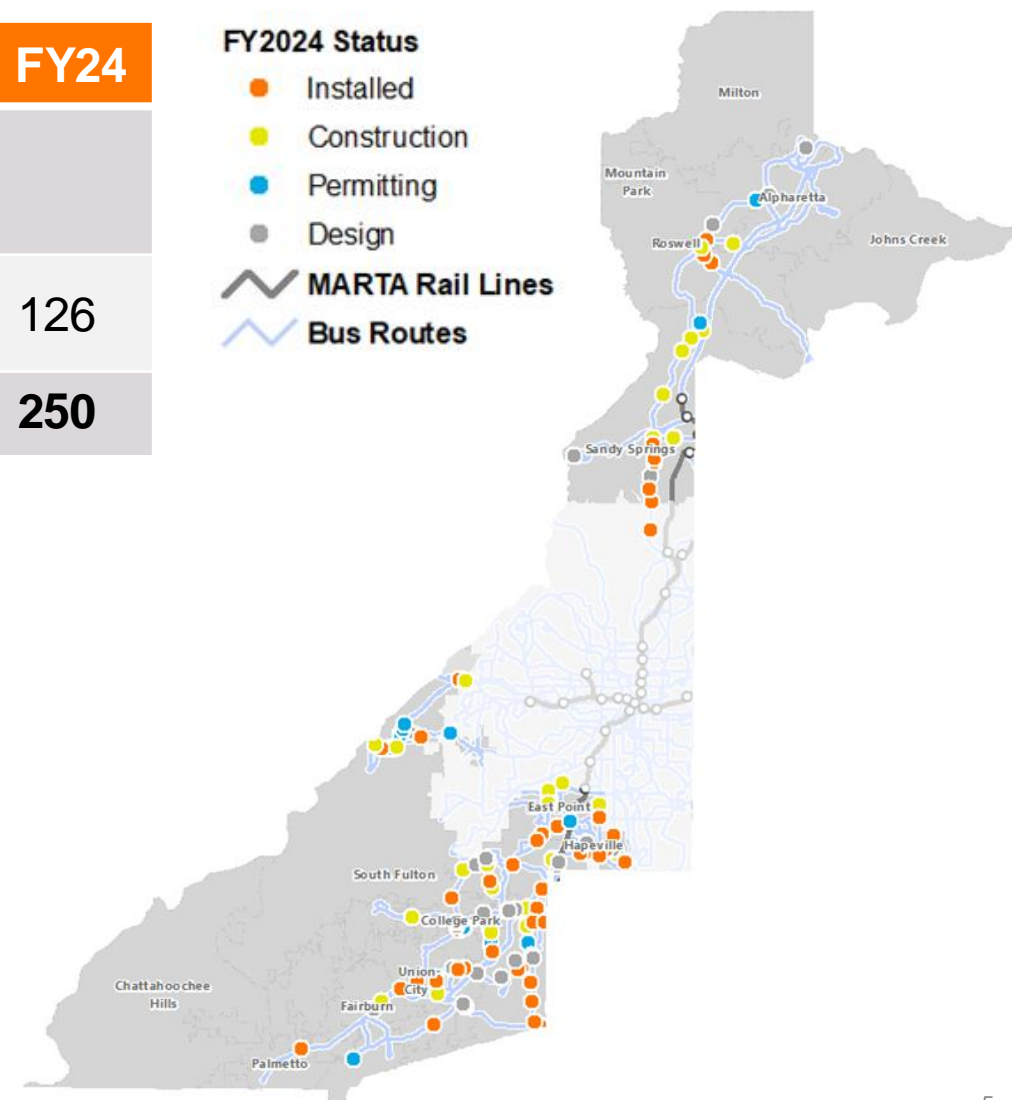
MARTA is making progress on the remaining 126 amenities for FY24:

FY24 Amenities Status

- ✓ 52 installed
- ✓ 30 under construction
- ✓ 15 in permitting
- ✓ 29 in design

FY2024 Status

- Installed
- Construction
- Permitting
- Design
- MARTA Rail Lines
- Bus Routes



BUS SHELTERS & AMENITIES UPDATE

902792 – Holcomb Bridge Rd & Warsaw Rd



Before



After

 **18** Weekday Boardings

Serves:

Local businesses, hotels, restaurants, and medical offices

Routes:

185 – Old Milton Parkway

SAFE ROUTES TO TRANSIT

This project will improve pedestrian conditions near high ridership bus stops.

- ✓ mix of high visibility crosswalks,
- ✓ curb extensions,
- ✓ medians and refuge islands,
- ✓ rapid-flash & pedestrian beacons

Pedestrian safety improvements along Roosevelt Highway is a high priority for South Fulton leaders and is an early focus of this program.



BUS NETWORK REDESIGN



Draft network complete



Equity adjustments being made







Public & stakeholder engagement in Spring

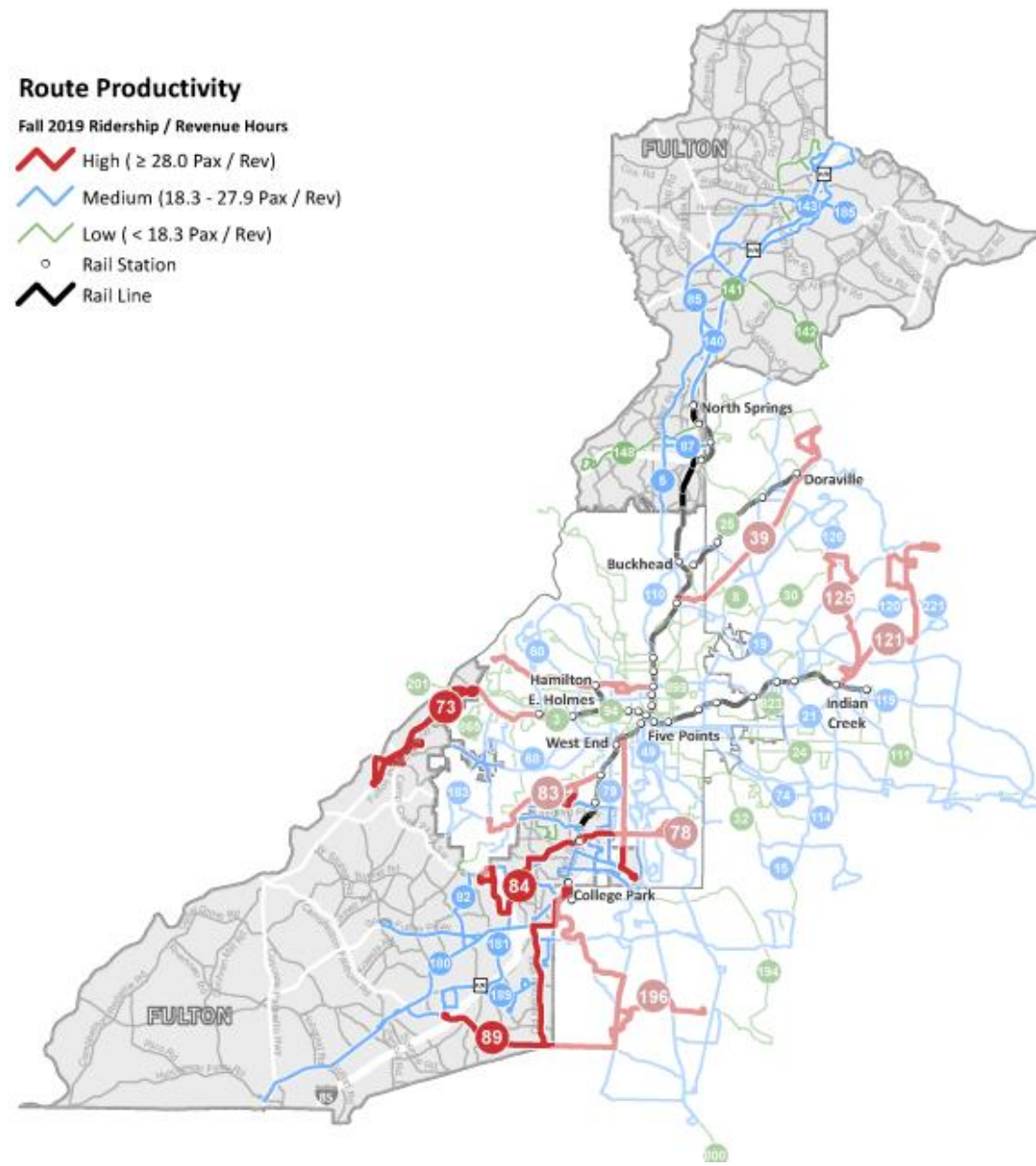


Refinement into the Final Network Plan to follow

Route Productivity

Fall 2019 Ridership / Revenue Hours

-  High (≥ 28.0 Pax / Rev)
-  Medium (18.3 - 27.9 Pax / Rev)
-  Low (< 18.3 Pax / Rev)
-  Rail Station
-  Rail Line





Capital Program

COLLEGE PARK STATION

- ✓ **Station Rehabilitation**
 - ✓ Exterior plazas complete
 - ✓ Installing perimeter fencing
 - ✓ Platform work estimated to start end of May pending coordination with Airport Station
 - ✓ Concourse design in progress
 - ✓ Project completion December 2026
- ✓ **Parking Lot Improvements**
 - ✓ 75% complete
 - ✓ Expected completion April 2024
 - ✓ Includes new security cameras



I-285 EXPRESS LANE TRANSIT

18-month visioning, scoping, planning and conceptual engineering study in July 2023.

- ✓ Coordination with GDOT's I-285 Express Lanes project
- ✓ Agency coordination with technical staff and policy working group members
- ✓ Identify project needs through existing conditions and transit market analysis
- ✓ Station locations and access assessment



Study Area



Legend

- I-285 EAST GDOT Express Lane
- I-285 WEST GDOT Express Lane
- ⋯ I-285 EAST GDOT Express Lane Extension
- ⋯ I-285 WEST GDOT Express Lane Extension
- SR 400 Express Lanes
- I-285 Top End Study Area
- Proposed Station Location



Other MARTA News

HOPE ATLANTA 2023 SNAPSHOT

SUCCESSSES – April 2023 to February 2024



14,000

Total engagements



423

Shelter placements



14

Reunifications



1,122

Social services referrals



14

Permanently housed





Artbound LIVE! **Call for Musicians**

Submissions due by MIDNIGHT, March 3, 2024



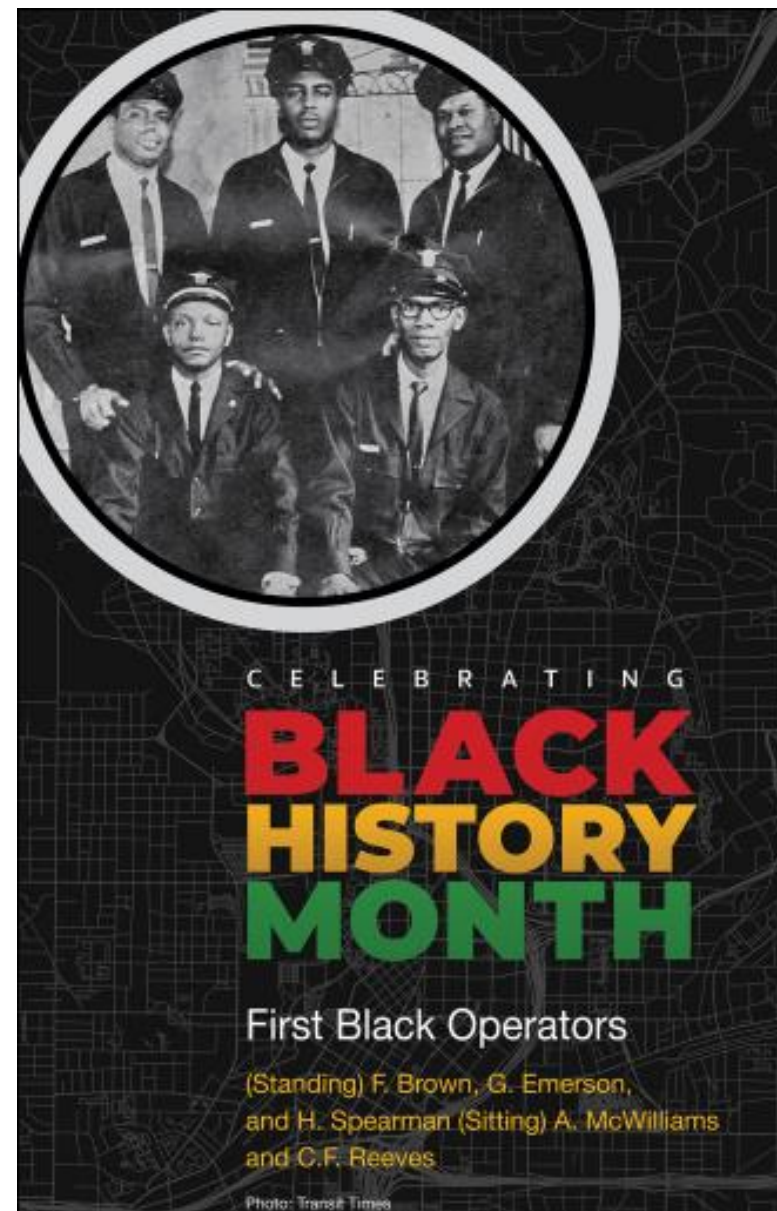
2024 ARTIST-IN- RESIDENCE

APPLICATIONS OPEN

Apply by 11:59pm EST on Feb 25

Go to: bit.ly/pafl-apply-2024

BLACK HISTORY MONTH





GEORGIA LEGISLATIVE SESSION





Thank You

